

R3-R2xN

2 pole | changeover contact | remanence



Main circuit

Available contact materials	⚡ AgNi for R3-R20N ⚡ AgNi + 5 μ Au for R3-R28N
Recommended minimum contact load	10 mA / 10 V for R3-R20N 5 mA / 5 V for R3-R28N
Rated load	10 A
Inrush current	30 A, 20 ms
AC load	2500 VA
DC load	fig. 3.
Mechanical endurance (cycles)	≥ 5 000 000
Electrical endurance at rated load AC-1 (cycles)	≥ 500 000

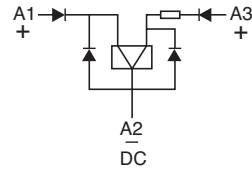
Control circuit

Nominal voltage	see table product references
Operating voltage range	0.7 U _N ... 1.25 U _N
Pick-up voltage (latch)	≤ 0.7 U _N
Release voltage (delatch)	≤ 0.7 U _N
ON pulse power	DC 1.5 W
OFF pulse power	DC 0.5 W

Coil table

V DC	mA ON	mA OFF
12	121	32
24	60	18
36	45	15
48	32	7
60	25	9
72	21	9
110	12.4	3.2

Internal diagram



Insulation

Test voltage open contact	1 kV / 1 min
Test voltage contact / contact	2.5 kV / 1 min
Test voltage contact / coil	2.5 kV / 1 min
Pollution degree	3
Overvoltage category	III
Insulation resistance at 500 V	≥ 1 GΩ

General data

Ambient temperature storage (no ice)	-40 ... 80 °C
Ambient temperature operation	-40 ... 70 °C
Minimum pulse length ON / OFF	50 ms
Maximum switching frequency at rated load	1200 / h
Dimension	fig. 4.
Weight	81 g
Housing material	PA / PC

Product references

Description	Type (x refers to contact material)	12	24	48	36	72	110
DC	R3-R2xN/DC...V	✓	✓	✓	✓	✓	✓

Other voltages on request. Please contact support@comatreleco.com.

«...» List coil voltage to complete product references

Accessories

Socket	S3-MR, S3-M0R, S3-M1R
Blanking plug	S0-NP (BAG 10 PCS)

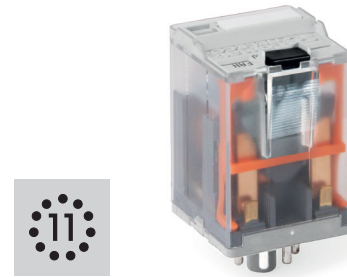


fig. 1. Wiring diagram

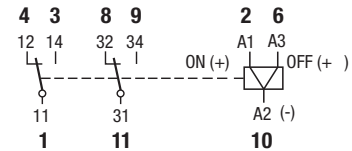


fig. 2. AC voltage endurance

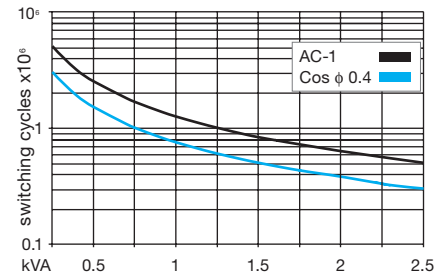


fig. 3. DC load limit curve

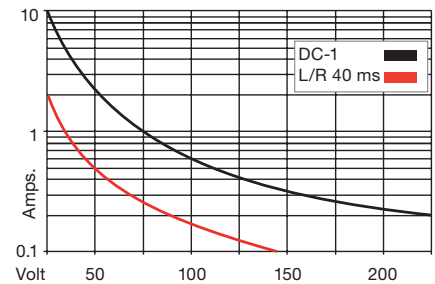
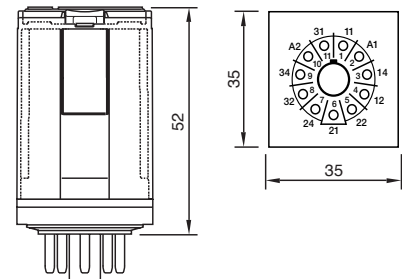


fig. 4. Dimension (mm)



Technical approvals, conformities

Standards IEC/EN 61810; IEC/EN 60947;
Railway standards EN 50155; EN 45545-2

